



## WinGPC Unity System Pilot Module

Software Module for Comprehensive Control of GPC Systems



### Active Control

PSS WinGPC is a flexible software solution that allows vendor independent data acquisition from all instruments on the market. This universal approach makes WinGPC Unity first choice for polymer analysis, since it reaches beyond methods and overcomes the limitations of single workstation installations. The WinGPC module System Pilot adds comprehensive and convenient system control via WinGPC Unity to the overall functionality.

### Transparent

Status and settings of the controlled system are displayed in the Instrument Manager, providing all information at one glance. Actions like turning on/off modules, setting parameters (e.g. flow rate, wavelength) or the definition of dedicated GPC "end actions" can be done coherently in one overview window.

### Compatibility

Supported systems are HP/Agilent 1100 and Agilent 1200, the software control for other vendors and systems is continuously added. Up to four different systems can be controlled with one WinGPC license with System Pilot. Scalable design allows access to fully controlled systems and partial or not controlled systems at the same time.

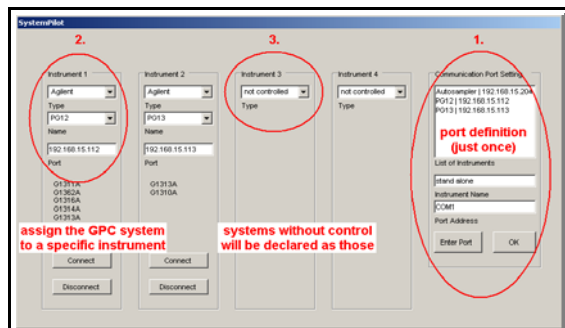
The System Pilot is available for single workstations and network solutions alike:

- WinGPC Unity
- WinGPC Unity with LAN data acquisition
- WinGPC Unity Client/Server

The System Pilot seamlessly integrates in existing installations. Existing sample lists are fully compatible and can be used as are. The System Pilot can be used with any WinGPC software module and is integrated into the Compliance Pack.

## Easy Configuration

On the first startup communication ports for all GPC systems can be defined and stored for future use. Users can assign specific system names for quick and easy identification.

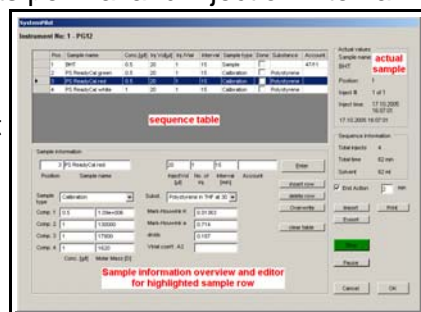


For each following login users can select the systems from a drop down list or choose “not controlled” for systems that are not actively controlled by the WinGPC Unity System Pilot. The last setup is always saved as default for the following connections.

## Convenient Sequence Management

Sample information are entered together with sample position, individual injection volume, number of injects per vial and injection interval.

For every sample a comment can be entered, that is saved with the sample in the WinGPC Unity sample database. WinGPC specific features, like overlaid injection, can still be used. Injection lists can be directly printed for documentation and saved for later use.



## Workflow

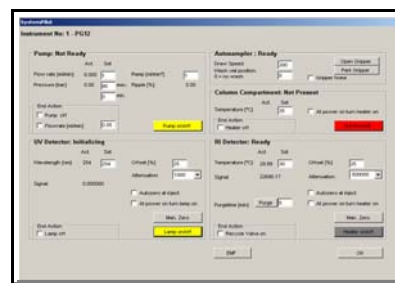
The total number of injections for the sequence as well as total analysis time and eluent consumption are displayed to help organize the lab routine. During a measurement the active sample is displayed, finished samples are flagged. The “Priority Sample” function allows to insert samples into an already running sequence. Substance specific parameters (dn/dc, Mark-Houwink coefficients and A2) can be selected by a simple mouse click.

## Traceability

The System Pilot module provides all important functions for traceability of measurements and for documentation of system performance.

## EMF (Early Maintenance Feedback)

information can be retrieved for automatic timely alerts when maintenance is due. The system manager shows



a comprehensive overview of all modules. All system information (e.g. conditions, status, performed action, and error messages) are recorded in a encrypted instrument audit trail.

This logbook is human readable only within the System Pilot and can not be edited or modified.

## Compliance

The System Pilot adds one instrument logbook for every controlled system. Full compliance for recorded data and for access to the System Pilot is achieved with the optional WinGPC Unity module Compliance Pack. User levels can be defined there to restrict System Pilot functionality to certain user groups.

### System requirements

Software	WinGPC Unity
Hardware, minimum	Pentium 3, 600 MHz, 256 MB RAM, 20 GB Hard disk, XGA Graphic Card, 17" Monitor
Operating System	Windows 2000, XP

### Order information

400-1010	System Pilot
----------	--------------

Product names are protected by manufacturers. Missing marks do not necessarily mean that they are free for use. The information in this publication is subject to change without notice.