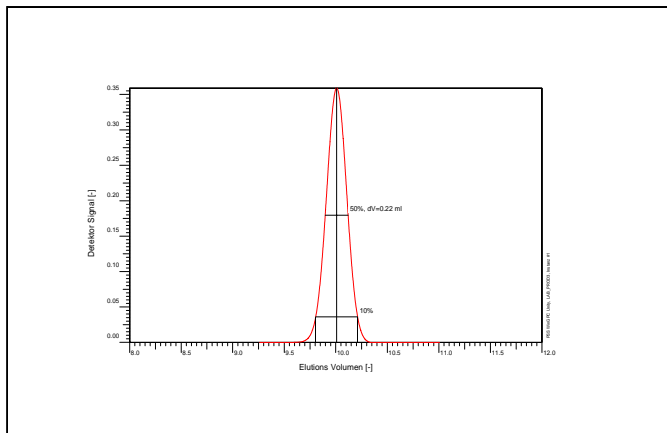


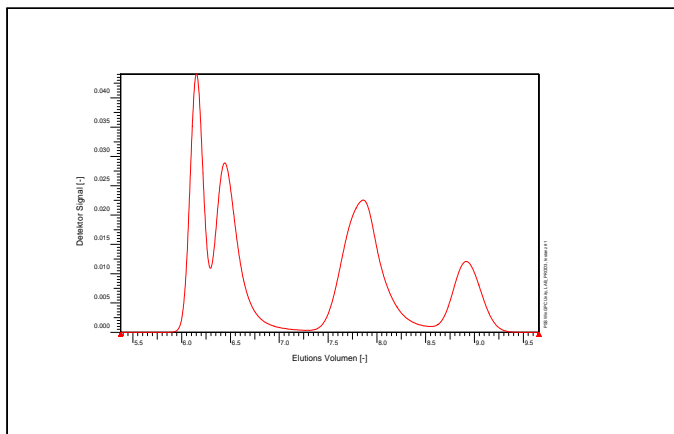
# GPC Column Quality Certificate

column: PSS SUPREMA 30 Å  
serial no: 5010611  
dimension [mm]: 8 x 300  
particle size [µm]: 10  
shipped in: aqueous with 0.05% sodium azide



## test chromatogram according to DIN 55672

sample EG  
theoretical plates / m 35000  
asymmetry 1,0



## Pullulan mix

component 1 Mw = 112000  
component 2 Mw = 10900  
component 3 Mw = 991  
component 4 Mw = 180

## test conditions

eluent aqueous with 0.05% sodium azide  
flow rate [ml/min] 1.0  
temperature [°C] 20  
pressure [bar] 12  
detection RI - Detector  
sample Ethyleneglycol, Pullulan mix  
injection volume [µl] 20  
operator mn  
data acquisition software PSS WinGPC Unity

Manufacture and control according to PSS method of analysis

Dr. G. Reinhold  
production director